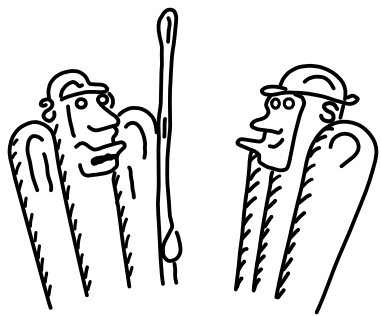


Friends of Centurion Way

Summer Festival Activity Walk and Quiz



Follow the map provided on the on the reverse side to reveal some of the secrets of Centurion Way
Fill in the answers in the spaces provided to win delicious refreshments from the stall located by the pedestrian footbridge.

1

Long before Centurion Way became a footpath/cycleway, it was a railway line running between Chichester, Lavant, Singleton, Cocking and Midhurst. The line opened in 1881 and, at some point, rows of these were erected to allow up-the-line to communicate with down-the-line and the trains to operate safely. What is it called?



2

This is a fine example of an ancient & special type of English tree. These were particularly important for building the ships that historically allowed people in Britain to trade with the rest of the world. Legend has it that King Charles II hid in one of these to escape execution by parliamentarians. What is it & can you tell how old it is?



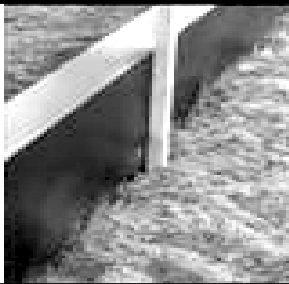
3

The water vole is under serious threat from habitat loss (according to the wildlife trust). This item provides an ideal environment for this native species. Maps going back 200 years show this feature is an ancient part of our local landscape. What is it called?



4

This black barrier fencing has been erected in preparation for Phase 1 development at Whitehouse Farm (Phase 1 includes land to the west of here intended for playing fields, a sports pavilion and temporary access to sewerage infrastructure). The fencing is intended to help ecologists capture and relocate certain types of creature before construction works commence. What sort of animals are they looking for?



5

Hook Dyke runs beneath Centurion way close to the North entrance to Bishop Luffa school. Hook Dyke once began at the wall of the old Westgate Brewery buildings (the site of which has since been completely redeveloped). It is known to be an ancient land feature but what did Williams-Freeman believe it might once have been?



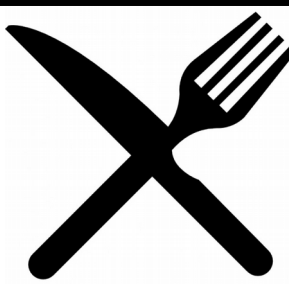
6

Centurion Way is a wonderful green corridor that acts as a North-South highway not only for humans but wildlife as well! It is particularly beneficial to shy nocturnal animals. Foxes and owls have been seen using this corridor at night. However what is another type of animal frequently following our path at night?



7

Centurion Way is now a long footpath/cycleway reaching all the way from Chichester to West Dean. At certain times of year, you'll find different fruit/nuts to forage. 200 yards south before reaching the workmen sculptures there is a walnut tree but what might you find to eat on the southernmost section of the path?



8

Wood from a wooden vessel, salvaged between high tides, from a mine-sweeper that was being broken up at Pounds Yard in Portsmouth. Richard Farmington was the man responsible for using it in a different way - what was here before it fell down?

